

# 10kw Vertical Wind Turbine



## 1. Production Presentation:

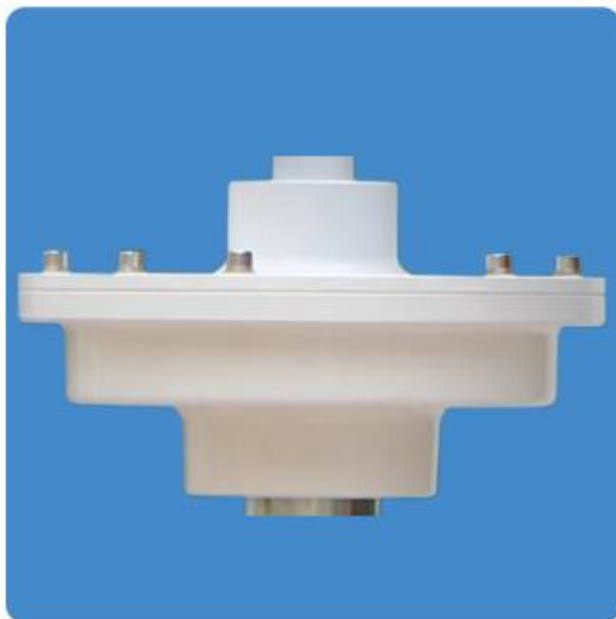
1. Capture wind from any direction, no limit on terrain, not be affected by turbulence
2. Low start up wind speed, low noise and vibration
3. PWM constant voltage recharge function provides stable output
4. Electronic brake and manual brake, optional.
5. Magnet material NdFeB (neodymium iron boron)
6. Generator with unique shockproof design, stable operation.
7. Application: Houses and Schools, Remote Communication Station, Vocational Villages, Monitoring Station, Water-pumping Station

## Parameter

Model	ES-10000w
Rated power	10kW
Maximum power	12kW
Rated voltage	380V
Turbine height	5m
Wheel diameter	3.9m
Start up wind speed	2m/s
Rated wind speed	10m/s
Survival wind speed	65m/s
Blades number	5
Blades material	Aluminum alloy
Generator case	maglev generator
Control system	Electromagnet
Speed regulation	Automatically windward
Working temperature	-40℃~80℃



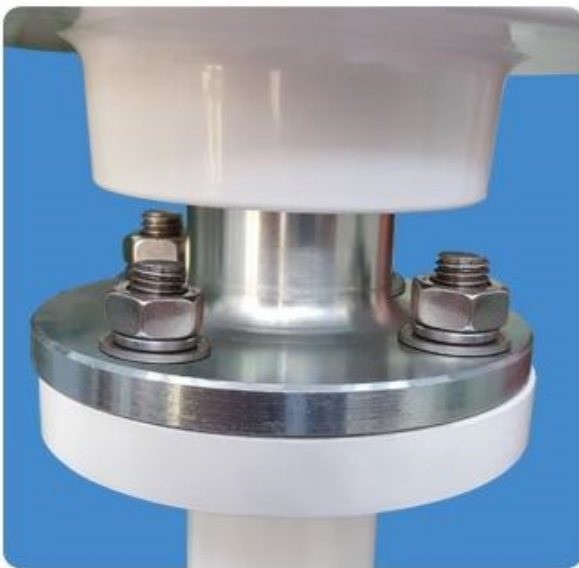
### Detail photos of our wind turbine



1. Patent generator, with low starting up torque, high wind energy utilization.

2. Maglev generator is made of permanent magnet, high power and low loss

Blades are made of high quality aluminum alloy plate, which surface using spray or oxidation treatment, better anti-corrosion, more beautiful and durable



Being installed by human design and easy for installation, maintenance and repair

## Actual pictures

Multi-faceted show







